

**Note:** If you want to resize the main panel size, you must subtract 1/16th of an inch (.0625”) from it’s neighboring panel’s length, width, or both.

Doing this accounts for the multiple folds.

Look at dimensions listed on each of the panels for a visual representation of this practice.



# 6x6 Square Iron Cross

Outside View

**Panel 2**  
5.9375 x 5.875

**Panel 5 (Back)**  
6 x 6

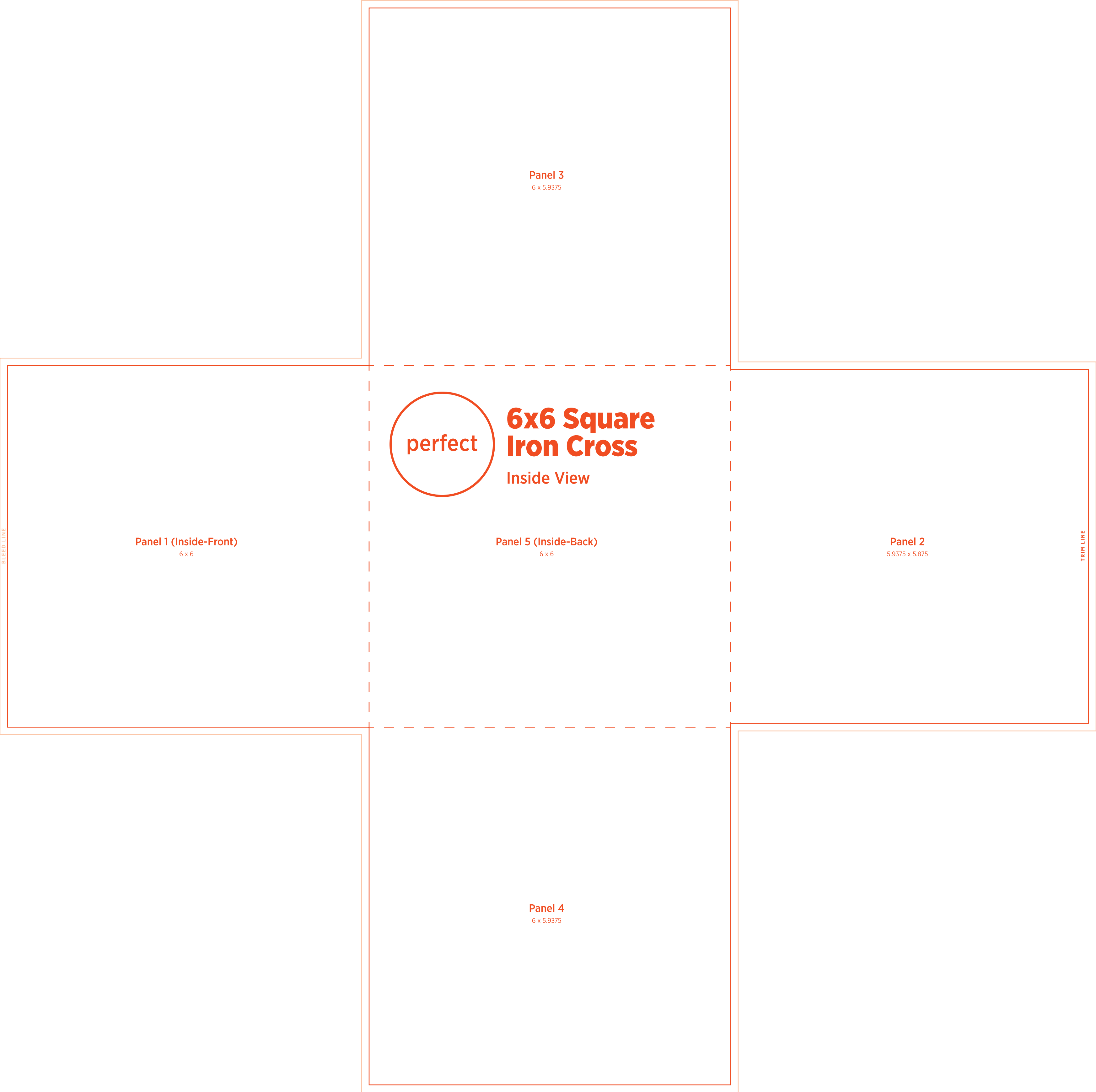
**Panel 1 (Front)**  
6 x 6

**Panel 4**  
6 x 5.9375

**Panel 3**  
6 x 5.9375

BLEED LINE

TRIM LINE



# 6x6 Square Iron Cross

Inside View

Panel 1 (Inside-Front)  
6 x 6

Panel 5 (Inside-Back)  
6 x 6

Panel 2  
5.9375 x 5.875

Panel 4  
6 x 5.9375

Panel 3  
6 x 5.9375

BLEED LINE

TRIM LINE